



AS OF WINTER 2025

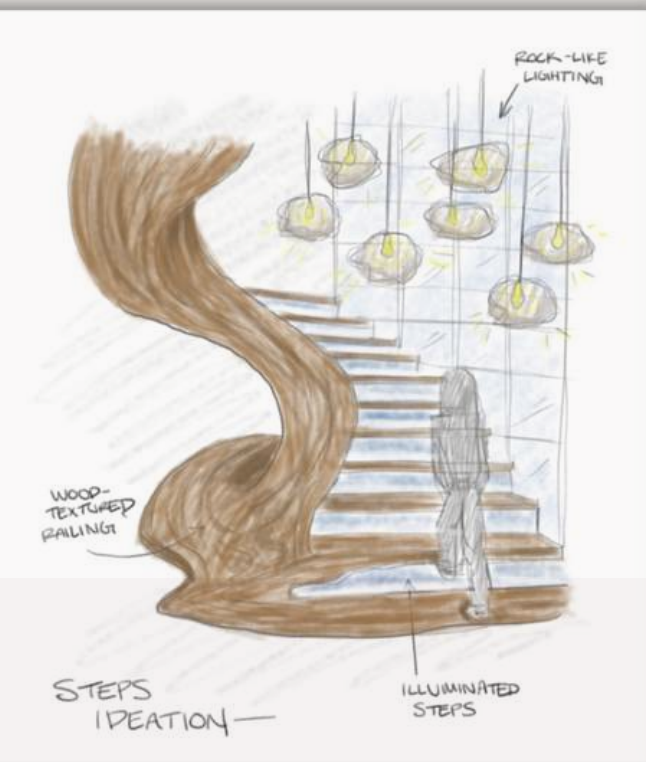


# MARY BETH LEE

INTERIOR DESIGN PORTFOLIO

See my website for more: [mblcreative.com](http://mblcreative.com)

# HELLO FRIEND!

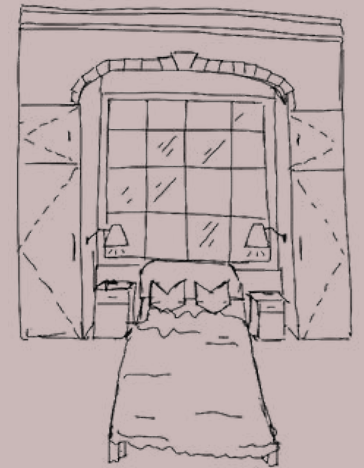
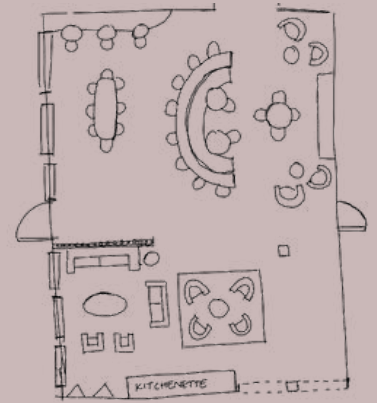


I am excited to share a selection of my favorite interior design projects, which I have had the privilege of working on both independently and in collaboration with other designers. I hope you find them as inspiring as I found the process of bringing them to life.



# INPATIENT HEALTHCARE FACILITY

Located in Denver Colorado, “Highpoint Healing,” is an adult inpatient behavioral treatment facility. The design scope, customized through research & an understanding of user needs, includes the lobby & reception area, milieu space, courtyard, group/art therapy room, patient rooms & toilet rooms, staff work charting area/lounge, exam room, consult rooms, quiet room, and various storage spaces.



## LOBBY/RECEPTION

Created in Revit and rendered in Enscape

SCHEMATICS



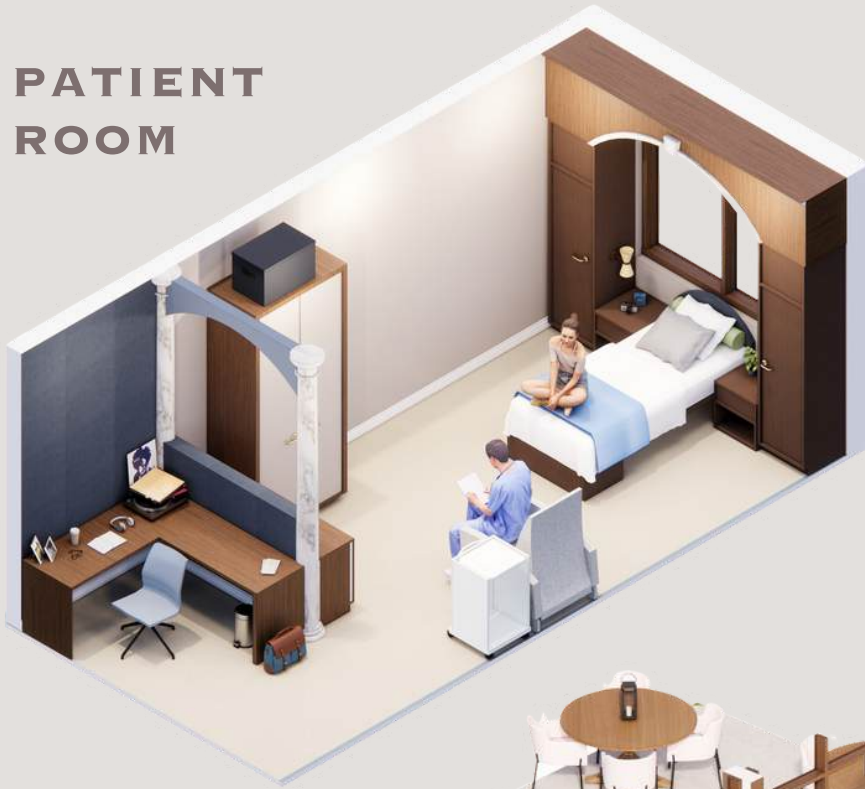
# COURTYARD



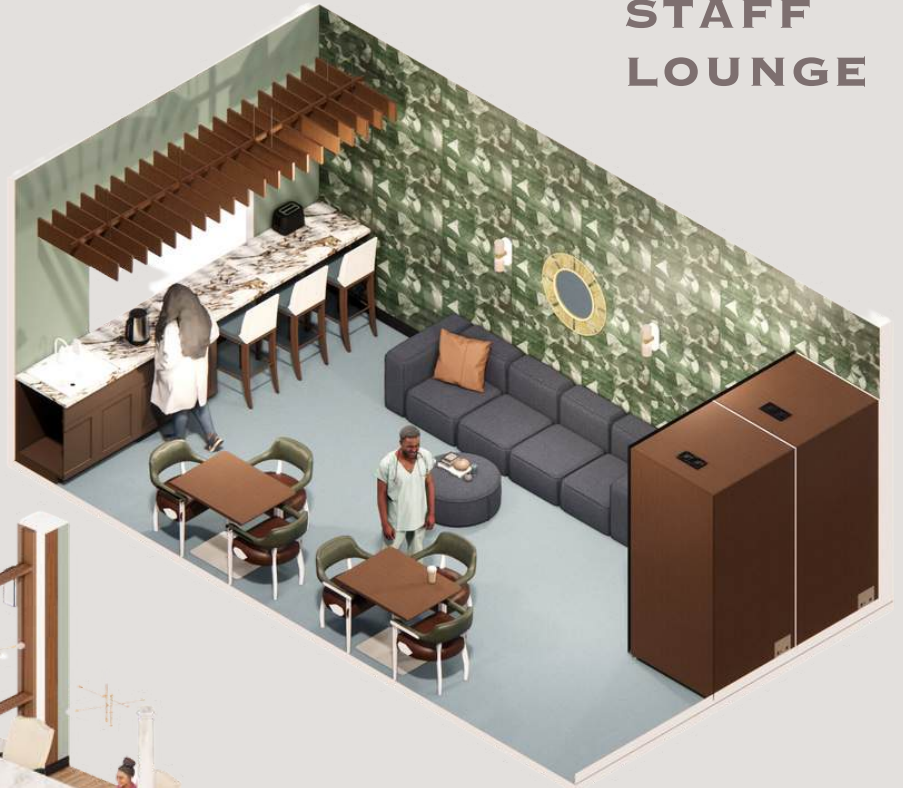
INPATIENT HEALTHCARE FACILITY

Created with Revit & Enscape

**PATIENT  
ROOM**



**STAFF  
LOUNGE**



**FLUID DINING  
SPACE**



# INPATIENT HEALTHCARE FACILITY

Created with Revit & Enscape



# 2 MARKETING OFFICE DESIGN

I developed a full design of a 2-story, 16,000 sq. ft. office space for the marketing company NEXT.” After creating their branding, I generated digital renderings, including floor plans, sections, and perspectives, and selected FF&E for the entire space. By prioritizing work/life balance and creating a restful work environment, I developed an office space that promotes wellbeing, collaboration, and intentional rest.



## RECEPTION

Created in Revit and rendered in Enscape

# WORKCAFE



## MARKETING OFFICE DESIGN

Created with Revit & Enscape



# RECHARGE LOUNGE



## MARKETING OFFICE DESIGN

Created with Revit & Enscape



# A RENOVATION OF JOHNSTON HALL

Johnston Hall at Anderson University has received an increase in student and faculty and needs a renovation. Considering the wants and needs of the users, we implemented a cafe, courtyard, study/tutoring rooms, flexible workspace, and supplies storage. To preserve Anderson University's architectural style, this design incorporates the Greek Revival style in fusion with Neoclassical elements, established through muted neutral tones, classic tile and brick, high ceilings, and gold fixtures.



## COURTYARD

Created in SketchUp and rendered in Enscape



## FLOORING FINISHES





# LOBBY & GALLERY

Created with SketchUp & Enscape





# STUDIO CAFE

Created with SketchUp & Enscape



LEVEL 01 FLOOR PLAN - SOUTH

SCALE: 1/32" = 1'-0"

0' 10" 0' 5" 0' 0" 0' 5" 0' 10"

SCALE: 3/32" = 1'-0"

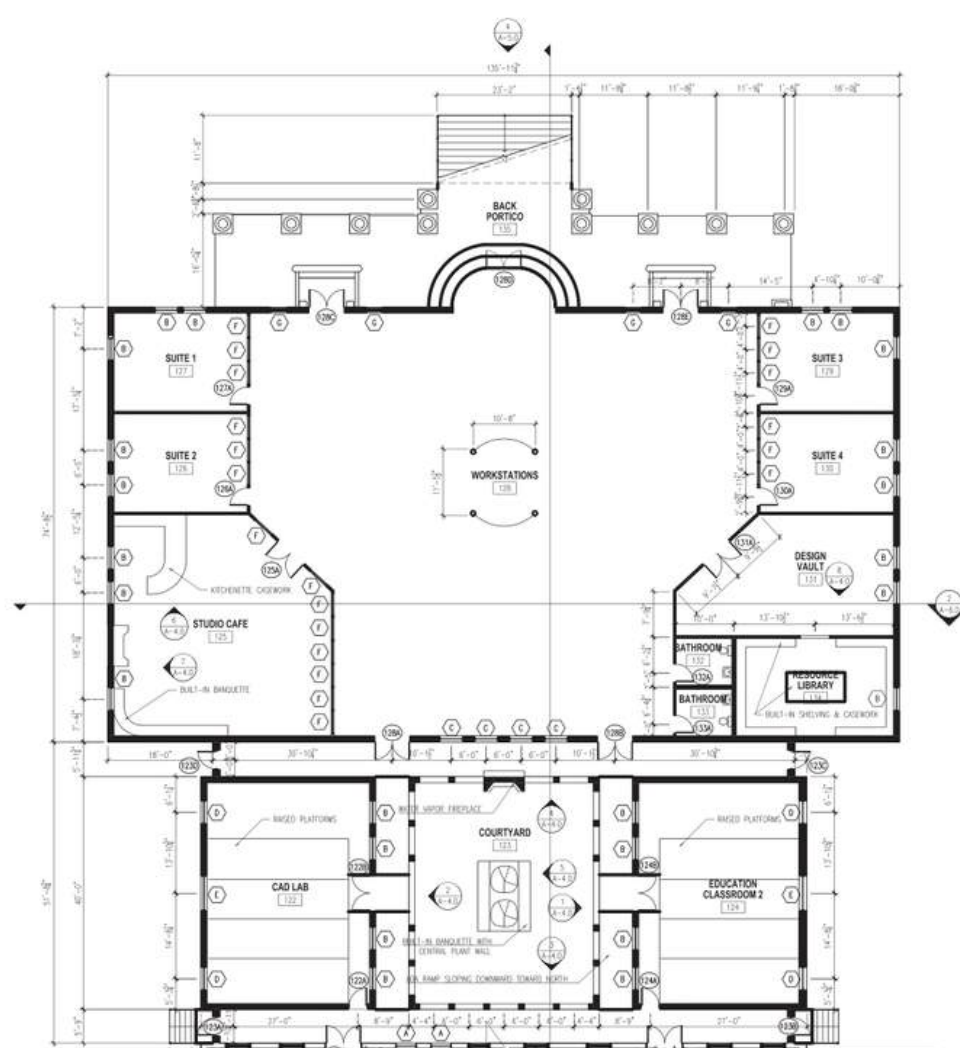


LEVEL 01 FLOOR PLAN - FULL VIEW

SCALE: 1/32" = 1'-0"

0' 10" 0' 5" 0' 0" 0' 5" 0' 10"

SCALE: 1/32" = 1'-0"



LEVEL 01 FLOOR PLAN - NORTH

SCALE: 1/32" = 1'-0"

0' 10" 0' 5" 0' 0" 0' 5" 0' 10"

SCALE: 3/32" = 1'-0"

LEGEND	
	EXISTING WALLS
	NEW WALLS
	EXISTING DOORS
	NEW DOORS
	EXISTING WINDOWS
	NEW WINDOWS



ANDERSON UNIVERSITY  
JOHNSTON HALL  
ANDERSON, SC

LEVEL 01 FLOOR PLAN

FILE NO: 03  
DATE: NOVEMBER 26, 2024  
AL/FH/CL: SHEET 3

A-2.2

# LEVEL 01 FLOOR PLAN

Created in AutoCAD





REVISIONS

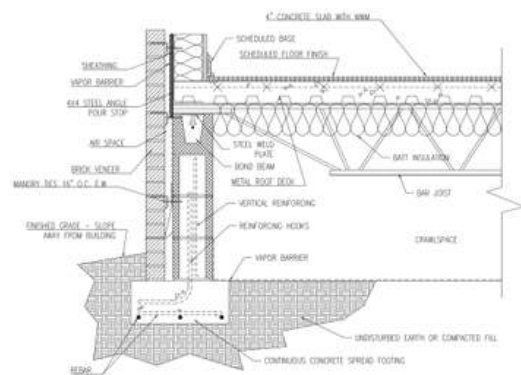


ANDERSON UNIVERSITY  
JOHNSTON HALL  
ANDERSON, SC

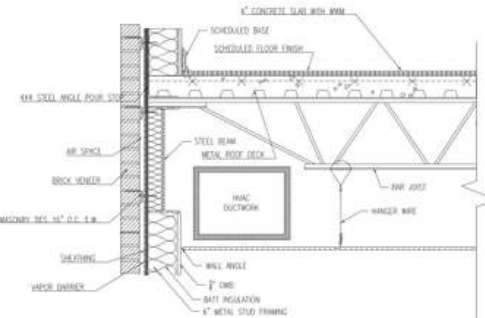
WALL SECTIONS & DETAILS

JOB NO. #  
DATE: 11/25/24  
AUTHOR: W.A.

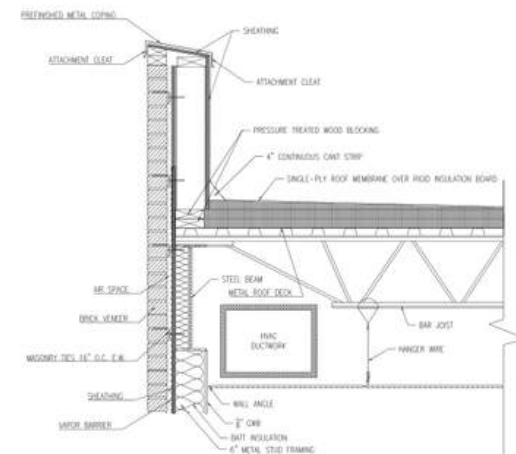
A-7.0



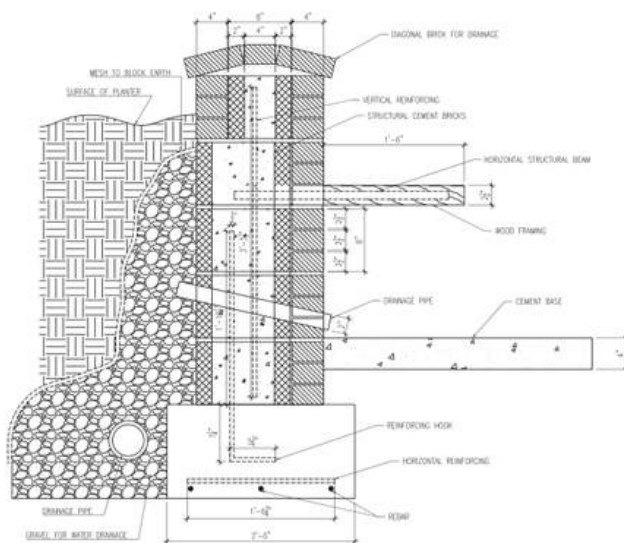
1 - WALL SECTION - BASE  
SCALE: 1" = 1'-0"



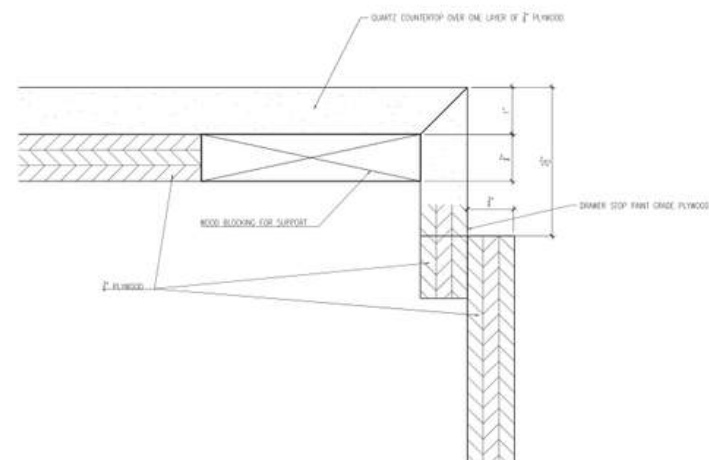
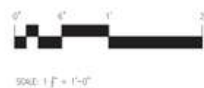
2 - WALL SECTION - SECOND FLOOR  
SCALE: 1" = 1'-0"



3 - WALL SECTION - ROOF  
SCALE: 1" = 1'-0"



4 - PLANTER WALL WITH BENCH DETAIL  
SCALE: 1 1/2" = 1'-0"



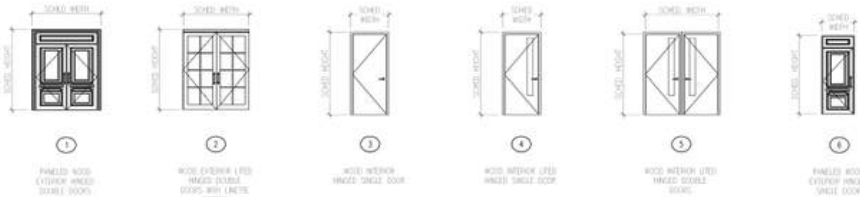
5 - CASEWORK DETAIL  
SCALE: 1'-0" = 1'-0"



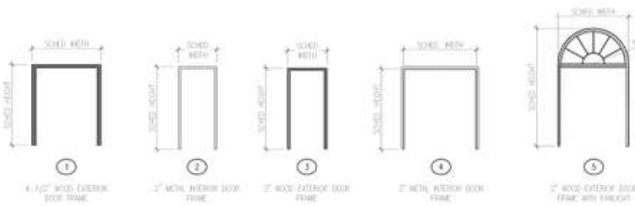
DETAIL DRAWINGS  
Created in AutoCAD

INTERIOR FINISH SCHEDULE																								
NO	ROOM NAME	FLOOR	BASE	WALLS																CEILING				COMMENTS
				NORTH				SOUTH				EAST				WEST								
	SUB	MAT	FIN	MAT	FIN	SUB	MAT	FIN	MAT	FIN	SUB	MAT	FIN	MAT	FIN	SUB	MAT	FIN	MAT	FIN	MT			
101	LOBBY	CONC	CT	CT1	W01	PT1	QWB	PT	PT3	QWB	PT	PT3	QWB	PT	PT3	QWB	PT	PT3	QWB	PT5	8"			
102	MAV STUDIO	CONC	CPT	CPT1	W01	PT1	QWB	PT	PT3	QWB	PT	PT3	QWB	PT	PT3	QWB	PT	PT3	QWB	PT5	20"			
103	LECTURE ROOM	CONC	CPT	CPT2	W01	PT1	QWB	PT	PT3	QWB	PT	PT3	QWB	PT	PT3	QWB	PT	PT3	QWB	PT5	8"			
104	OFFICE 1	CONC	CPT	CPT3	W01	PT1	QWB	PT	PT3	QWB	PT	PT3	QWB	PT	PT3	QWB	PT	PT3	QWB	PT5	8"			
105	OFFICE 2	CONC	CPT	CPT3	W01	PT1	QWB	PT	PT3	QWB	PT	PT3	QWB	PT	PT3	QWB	PT	PT3	QWB	PT5	8"			
106	OFFICE 3	CONC	CPT	CPT3	W01	PT1	QWB	PT	PT3	QWB	PT	PT3	QWB	PT	PT3	QWB	PT	PT3	QWB	PT5	8"			
107	OFFICE 4	CONC	CPT	CPT3	W01	PT1	QWB	PT	PT3	QWB	PT	PT3	QWB	PT	PT3	QWB	PT	PT3	QWB	PT5	8"			
108	OFFICE 5	CONC	CPT	CPT3	W01	PT1	QWB	PT	PT3	QWB	PT	PT3	QWB	PT	PT3	QWB	PT	PT3	QWB	PT5	8"			
109	DEAN'S OFFICE	CONC	CPT	CPT3	W01	PT1	QWB	PT	PT3	QWB	PT	PT3	QWB	PT	PT3	QWB	PT	PT3	QWB	PT5	8"			
110	CAD Lab	CONC	CPT	CPT1	W01	PT1	QWB	PT	PT3	QWB	PT	PT3	QWB	PT	PT3	QWB	PT	PT3	QWB	PT5	8"			
111	Courtyard	CONC	CT	CT2	NA	NA	BK1	PM	PM1	BK1	PM	PM1	BK1	PM	PM1	BK1	PM	PM1	NA	NA	20"			
112	Workspace	CONC	CPT	CPT1	W01	PT1	QWB	PT	PT3	QWB	PT	PT3	QWB	PT	PT3	QWB	PT	PT3	QWB	ACT	MT1	8"		
113	Design Vault	CONC	CPT	CPT1	W01	PT1	QWB	PT	PT3	QWB	PT	PT3	QWB	PT	PT3	QWB	PT	PT3	QWB	ACT	MT1	8"		
114	Resource Library	CONC	CPT	CPT1	W01	PT2	QWB	PT	PT3	QWB	PT	PT4	QWB	PT	PT4	QWB	PT	PT4	ACT	MT1	8"			
115	Studio Cafe	CONC	W01	W02/CT3	W01	PT1	QWB	PT	PT3	QWB	PT	PT3	QWB	PT	PT3	QWB	PT	PT3	QWB	PT5	W03	8"		
116	Suite 1	CONC	CPT	CPT4	W01	PT1	QWB	PT	PT4	QWB	WP	WP1	QWB	PT	PT4	QWB	PT	PT4	ACT	MT1	8"			
117	Suite 2	CONC	CPT	CPT4	W01	PT1	QWB	WP	WP1	QWB	PT	PT4	QWB	PT	PT4	QWB	PT	PT4	ACT	MT1	8"			
118	Suite 3	CONC	CPT	CPT4	W01	PT1	QWB	WP	WP1	QWB	PT	PT4	QWB	PT	PT4	QWB	PT	PT4	ACT	MT1	8"			
119	Suite 4	CONC	CPT	CPT4	W01	PT1	QWB	WP	WP1	QWB	PT	PT4	QWB	PT	PT4	QWB	PT	PT4	ACT	MT1	8"			
120	Bathrooms	CONC	CT	CT4	B8	B8T	QWB	PT	PT3	QWB	PT	PT3	QWB	PT	PT3	QWB	PT	PT3	QWB	PT5	ACT	8"		

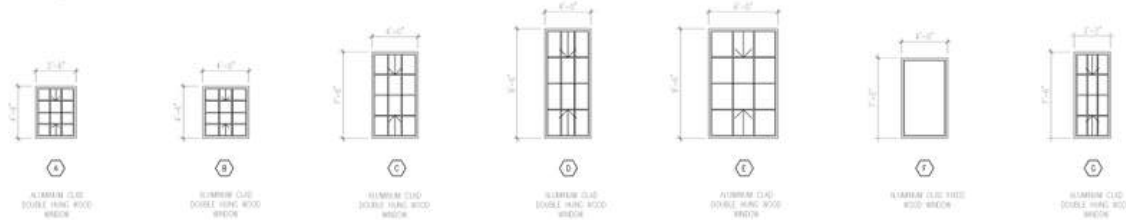
DOOR & FRAME SCHEDULE													
DOOR						FRAME					HW SET	COMMENTS	
NO.	SIZE	TYPE	THK	MATL	GLAZING	TYPE	MATL	HEAD	JAMB	SILL			
106C	5'-0" x 7'-0"	1	1 3/4"	WD	NO	1	WD	H-1	J-1	CPT/CMT	SET 1	----	
111A	5'-0" x 7'-0"	4	1 1/4"	WD	YES	2	MTL	H-3	J-3	CT/CPT	SET 2	----	
112A	5'-0" x 7'-0"	4	1 1/4"	WD	YES	2	MTL	H-3	J-3	CT/CPT	SET 2	----	
114A	5'-0" x 7'-0"	1	1 3/4"	WD	NO	1	WD	H-1	J-1	CT/CMT	SET 1	----	
115A	5'-0" x 7'-0"	4	1 1/4"	WD	YES	2	MTL	H-3	J-3	NONE	SET 2	----	
116A	5'-0" x 7'-0"	4	1 1/4"	WD	YES	2	MTL	H-3	J-3	NONE	SET 2	----	
117A	5'-0" x 7'-0"	4	1 1/4"	WD	YES	2	MTL	H-3	J-3	NONE	SET 2	----	
118A	5'-0" x 7'-0"	4	1 1/4"	WD	YES	2	MTL	H-3	J-3	NONE	SET 2	----	
119A	5'-0" x 7'-0"	4	1 1/4"	WD	YES	2	MTL	H-3	J-3	NONE	SET 2	----	
120A	5'-0" x 7'-0"	3	1 3/4"	WD	NO	2	MTL	H-3	J-3	NONE	SET 2	----	
120B	5'-0" x 7'-0"	3	1 3/4"	WD	NO	2	MTL	H-3	J-3	CT/CPT	SET 2	----	
121A	5'-0" x 7'-0"	4	1 1/4"	WD	YES	2	MTL	H-3	J-3	CT/CPT	SET 2	----	
122A	5'-0" x 7'-0"	6	1 3/4"	WD	NO	3	WD	H-4	J-4	CMT/CPT	SET 1	----	
122B	5'-0" x 7'-0"	1	1 3/4"	WD	NO	1	WD	H-1	J-1	CMT/CPT	SET 1	----	
123A	5'-0" x 7'-0"	6	1 3/4"	WD	NO	3	WD	H-4	J-4	NONE	SET 1	----	
123B	5'-0" x 7'-0"	6	1 3/4"	WD	NO	3	WD	H-4	J-4	NONE	SET 1	----	
123C	5'-0" x 7'-0"	6	1 3/4"	WD	NO	3	WD	H-4	J-4	NONE	SET 1	----	
123D	5'-0" x 7'-0"	6	1 3/4"	WD	NO	3	WD	H-4	J-4	NONE	SET 1	----	
124A	5'-0" x 7'-0"	6	1 3/4"	WD	NO	3	WD	H-4	J-4	CMT/CPT	SET 1	----	
124B	5'-0" x 7'-0"	1	1 3/4"	WD	NO	1	WD	H-1	J-1	CMT/CPT	SET 1	----	
125A	6'-4" x 7'-0"	5	1 1/4"	WD	YES	4	MTL	H-2	J-2	CT/LVT	SET 2	----	
126A	5'-0" x 7'-0"	4	1 1/4"	WD	YES	2	MTL	H-3	J-3	CT/CPT	SET 4	----	
127A	5'-0" x 7'-0"	4	1 1/4"	WD	YES	2	MTL	H-3	J-3	CT/CPT	SET 4	----	
128A	5'-0" x 7'-0"	2	1 1/4"	WD	YES	5	WD	H-1	J-1	CMT/CPT	SET 1	----	
128B	5'-0" x 7'-0"	2	1 1/4"	WD	YES	5	WD	H-1	J-1	CMT/CPT	SET 1	----	
128C	5'-0" x 7'-0"	1	1 3/4"	WD	NO	1	WD	H-1	J-1	CT/CMT	SET 1	----	
128D	5'-0" x 7'-0"	2	1 1/4"	WD	YES	1	WD	H-1	J-1	CT/CMT	SET 1	----	
128E	5'-0" x 7'-0"	1	1 3/4"	WD	NO	1	WD	H-1	J-1	CT/CMT	SET 1	----	
129A	5'-0" x 7'-0"	4	1 1/4"	WD	YES	2	MTL	H-3	J-3	CT/CPT	SET 4	----	
130A	5'-0" x 7'-0"	4	1 1/4"	WD	YES	2	MTL	H-3	J-3	CT/CPT	SET 4	----	
131A	6'-4" x 7'-0"	5	1 1/4"	WD	YES	4	MTL	H-2	J-2	CT/CPT	SET 2	----	
132A	5'-0" x 7'-0"	3	1 3/4"	WD	NO	2	MTL	H-3	J-3	NONE	SET 3	----	
133A	5'-0" x 7'-0"	3	1 3/4"	WD	NO	2	MTL	H-3	J-3	NONE	SET 3	----	



DOOR TYPE ELEVATIONS  
SCALE: 3/16" = 1'-0"



DOOR FRAME TYPE ELEVATIONS  
SCALE: 3/16" = 1'-0"



WINDOW TYPE ELEVATIONS  
SCALE: 3/16" = 1'-0"

HARDWARE LEGEND	
SET 1	ENTRY FUNCTION LOCK
SET 2	OFFICE FUNCTION LOCK
SET 3	PRIVATE FUNCTION LOCK
SET 4	DEADBOLT FUNCTION LOCK

HEAD/JAMB LEGEND	
H-1/J-1	EXTERIOR HINGED DOUBLE DOOR
H-2/J-2	INTERIOR HINGED DOUBLE DOOR
H-3/J-3	INTERIOR HINGED SINGLE DOOR
H-4/J-4	EXTERIOR HINGED SINGLE DOOR

FINISH LEGEND				
FIN	DESCRIPTION	MANUFACTURER	MODEL	COMMENTS
CT1	CERAMIC TILE	EDWARD MARTIN	11872	
CT2	CERAMIC TILE	LOWES	104801999	
CT3	CERAMIC TILE	DALTILE	0470	
CT4	CERAMIC TILE	DALTILE	PF05	
CPT1	CARPET TILE	EF CONTRACT	MTUNE_LNE12	LEED, NSF140-GOLD, CR GREEN LABEL PLUS
CPT2	CARPET TILE	INTERFACE	1406002500	LEED, GREENCIRCLE CERT. RECYCLABLE
CPT3	CARPET TILE	SHAW CONTRACT	52113	CRADLE TO CRADLE, LBC COMPLIANT, NSF140-GOLD
CPT4	CARPET TILE	AMERICAN BLTTRITE	CRS-07-H	
W02	LUXURY VINYL PLANKS	CORETEC FLOORS	V735-03018	GREENGUARD GOLD CERT., WATERPROOF
W03	WOOD PANELING	MCM ACOUSTICAL	N/A	FSC CERT. CLEAN AIR GOLD, CLASS A FIRE-RATED
PT1	INTERIOR PAINT	PPG PAINTS	PPG1025-1	LEED CERTIFIED, LOW VOCs
PT2	INTERIOR PAINT	PPG PAINTS	PPG1024-3	LEED CERTIFIED, LOW VOCs
PT3	INTERIOR PAINT	PPG PAINTS	PPG1024-3	LEED CERTIFIED, LOW VOCs
PT4	INTERIOR PAINT	BENJAMIN MOORE	2113-40	LEED CERTIFIED, LOW VOCs
PT5	INTERIOR PAINT	PPG PAINTS	PPG1025-1	LEED CERTIFIED, LOW VOCs
PT6	INTERIOR PAINT	PPG PAINTS	PPG1025-1	LEED CERTIFIED, LOW VOCs
RB1	RUBBER BASEBOARD	ARMSTRONG	R41FS	FLOORSORE/SCS, LOW EMITTING
PM1	PORTSMOUTH BRICK	CHEROKEE BRICK	N/A	
WP1	WALLPAPER	PHILLIP JEFFRIES	8958	CLASS A FIRE-RATED
MF1	ACOUSTIC CEILING TILE	ARMSTRONG	T356	CLASS A FIRE-RATED, NRC-0.70, CAC-45, AC-170



# 4 CONTAINER HOME DESIGN

Working with a partner, we developed a beach house located in Peru using different storage containers, implementing bright colors and unique textures to embrace Peruvian culture in this design. This design was developed in SketchUp, AutoCAD Architecture, and Enscape.

## EXTERIOR PERSPECTIVE

Created in SketchUp  
and rendered in Enscape







BUILDING SECTIONS

Created in SketchUp  
and rendered in Enscape



# ADDITIONAL RENDERINGS

Generated in Sketchup & Enscape



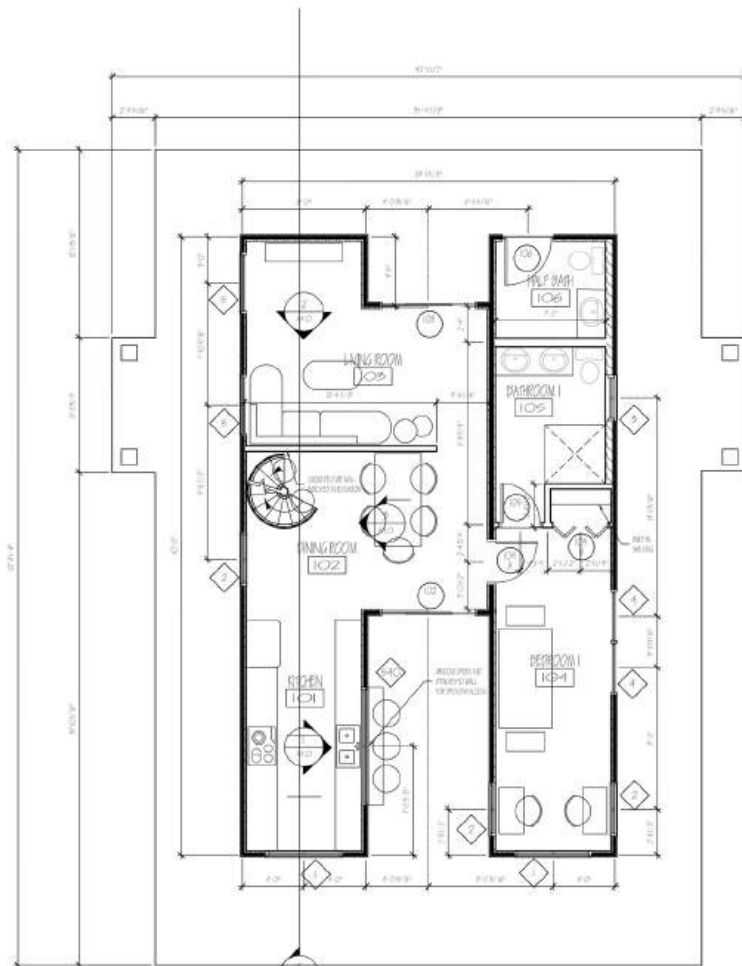
**KITCHEN VIEW**



**SOUTH EXTERIOR VIEW**

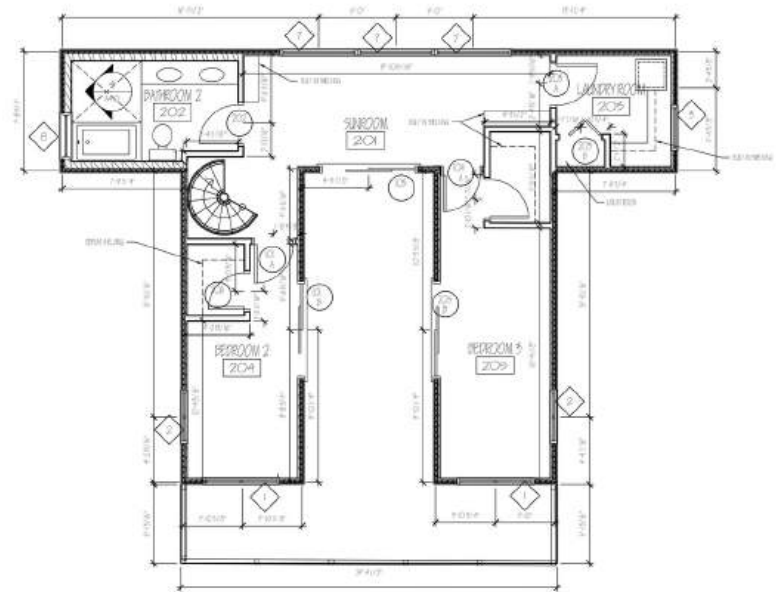


**LIVING ROOM VIEW**



A2.0 - ARCHITECTURAL FIRST FLOOR PLAN

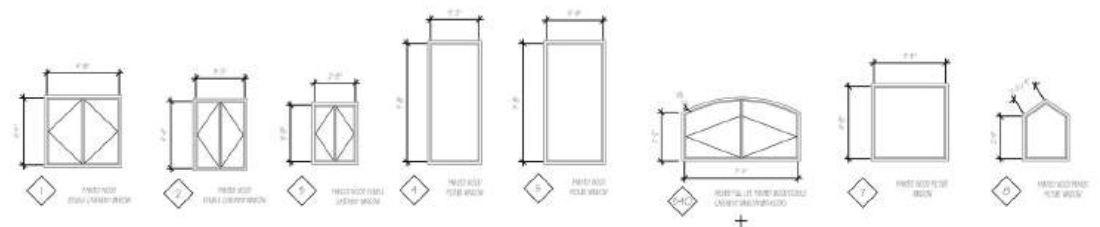
1. FLOOR FINISHES ARE INDICATED BY SHADING PATTERNS
2. ALL DIMENSIONS ARE IN FEET AND INCHES



A2.1 - ARCHITECTURAL SECOND FLOOR PLAN

1. FLOOR FINISHES ARE INDICATED BY SHADING PATTERNS
2. ALL DIMENSIONS ARE IN FEET AND INCHES

### WINDOW ELEVATIONS



A CONTAINER HOME FOR  
THE CASTILLO-CHAVEZ FAMILY  
PIURA, PERU  
FLOOR PLAN SHEETS

DESIGN: BUREAU OF ARCHITECTURE  
DATE: 06/20/24  
AUTHOR: BUREAU

A-2.0

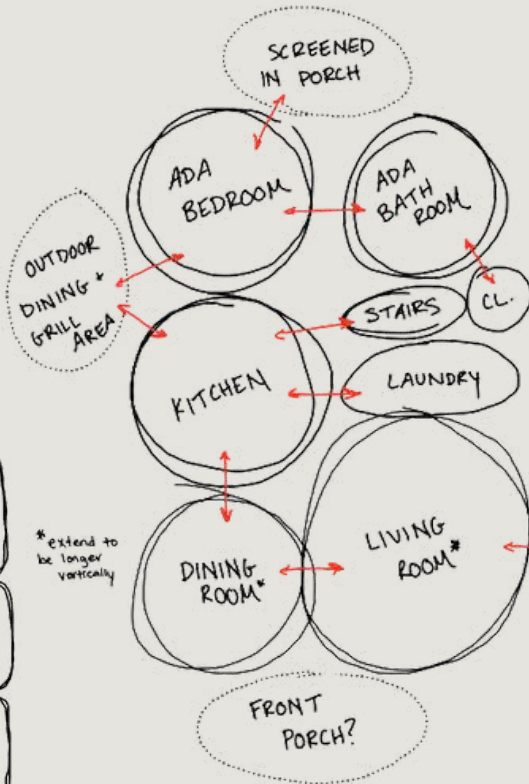
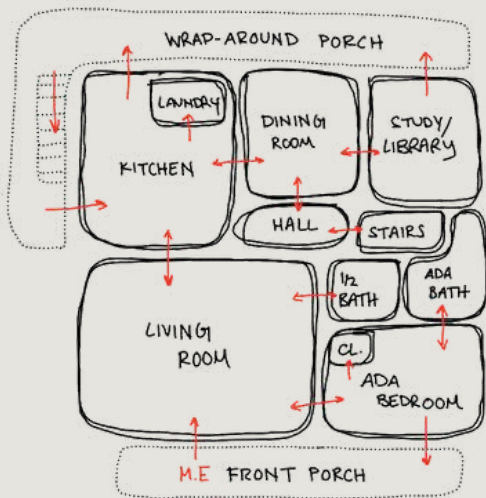
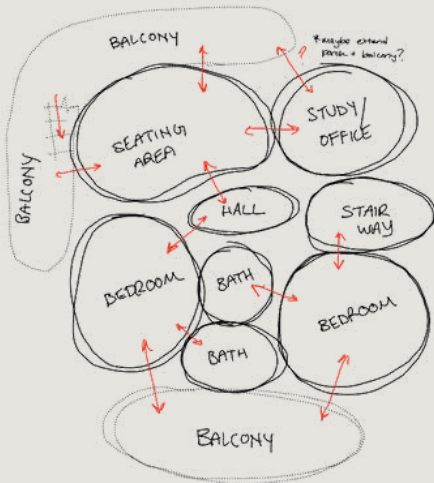
DIMENSIONED FIRST AND SECOND FLOOR PLANS  
Completed in AutoCAD Architecture



# A RENOVATION OF A SWISS CHALET BUNGALOW

Entire project hand rendered with  
marker and colored pencil

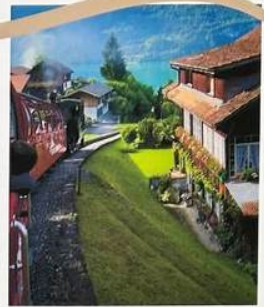
## SPACE PLANNING



## CONCEPT STATEMENT

MB Interiors has been commissioned to fully renovate and redesign the Green family Bungalow in Ojai, California. The entire bungalow, including the kitchen, dining room, living space, bedrooms, bathrooms, office/study, and the entire exterior will be included in this design project. Specific services will include: programming, space planning, specification of furnishings, fixtures, equipment, budgeting, scheduling, decorative decisions, construction documents, and hand-renderings.

The Swiss Chalet Revival is the main inspiration for this Bungalow; utilizing functional balconies with whimsical balustrades, decorative verge-board, symmetrical windows, muted natural colors, and authentic red-wood to bring the Swiss Alps to the quiet city of Ojai, California.



CONCEPT IMAGE



EXTERIOR STONE

## EXTERIOR ELEVATION



PORCH SECTIONAL



PORCH  
FIRE TABLE

PORCH  
END TABLE

PORCH  
LIGHT



PORCH  
SWING

MAIN  
WOOD







QUARTZ COUNTERTOP

RENDERED FIRST FLOOR PLAN



KITCHEN ACCENT PAINT



KITCHEN PENDANT



MIRROR SUBWAY TILE BACKSPLASH



KITCHEN PERSPECTIVE



MAIN PAINT COLOR



MAIN SOFA



SOFA UPHOLSTERY



LOVESEAT



CONSOLE TABLE



ADA BEDROOM FRAME

ADA BEDROOM PAINT



FLOOR MIRROR



DRESSER



DINING LIGHT



DINING CHAIRS & MAIN PAINT



DINING TABLE



DINING ROOM PERSPECTIVE



LIBRARY WALL PAINT



LIBRARY CHAIR



LIBRARY RUG



LIBRARY SCOCNE



LIBRARY PARQUET FLOORING



LIBRARY PERSPECTIVE



COOPER BUNGALOW  
OJAI, CALIFORNIA

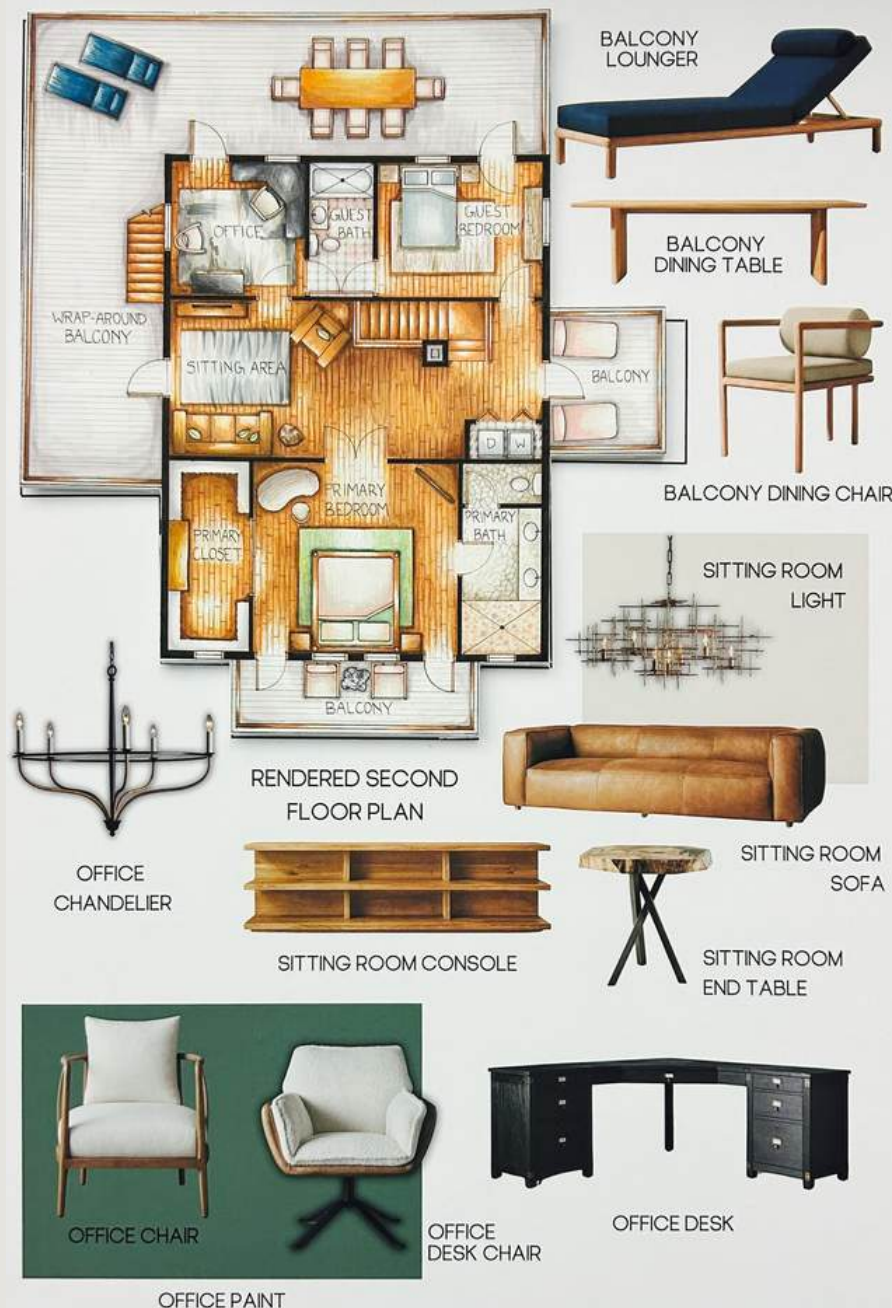
2/5  
ID 253

COOPER BUNGALOW  
OJAI, CALIFORNIA

3/5  
ID 253

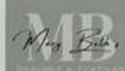
# PRESENTATION BOARDS





COOPER BUNGALOW  
OJAI, CALIFORNIA

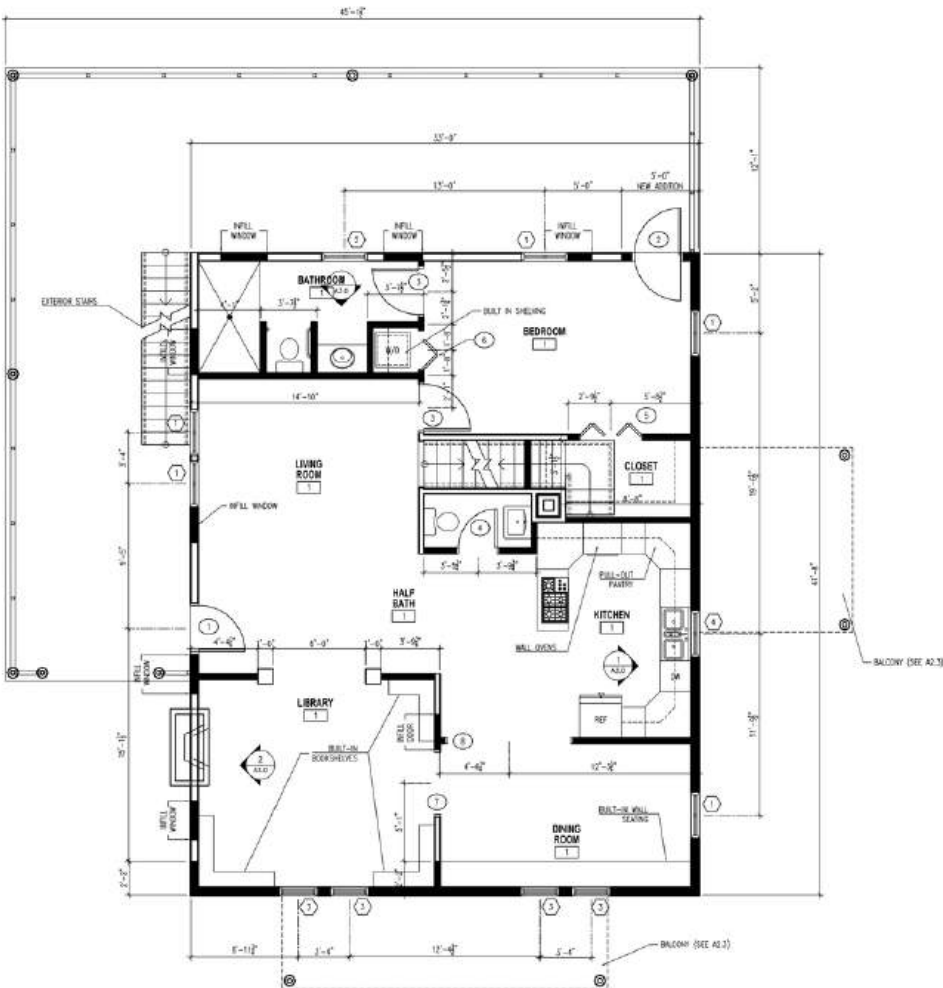
4/5  
ID 253



COOPER BUNGALOW  
OJAI, CALIFORNIA

5/5  
ID 253

# PRESENTATION BOARDS

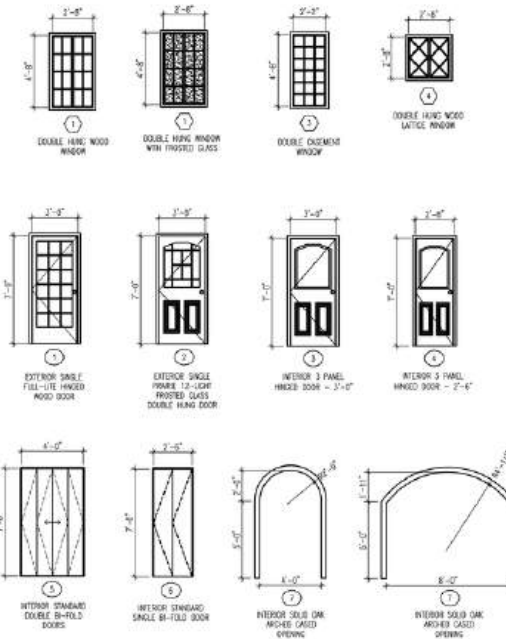


# ARCHITECTURAL FIRST FLOOR PLAN

SCALE: 1/4" = 1'-0"

THESE PLANS ARE BASED ON INFORMATION PROVIDED BY THE OWNER. THE DESIGNER ASSUMES THIS INFORMATION TO BE ACCURATE AND ASSUMES NO RESPONSIBILITY FOR THE ACCURACY OF DATA PROVIDED BY OTHERS.  
IF HIDDEN CONDITIONS ARE DISCOVERED, CONTACT DESIGNER BEFORE PROCEEDING.  
ALL DIMENSIONS ARE TO FACE OF STUD UNLESS NOTED OTHERWISE.  
ALL INTERIOR WALLS ARE 2x4 WITH 1" GYPSUM UNLESS NOTED OTHERWISE.

## WINDOW & DOOR LEGEND



## LEGEND

	EXISTING WALL
	NEW WALL
	NEW WINDOW
	NEW BUILT-IN 5'-0" K.I.F.
	DOOR TAG SYMBOL
	WINDOW TAG SYMBOL



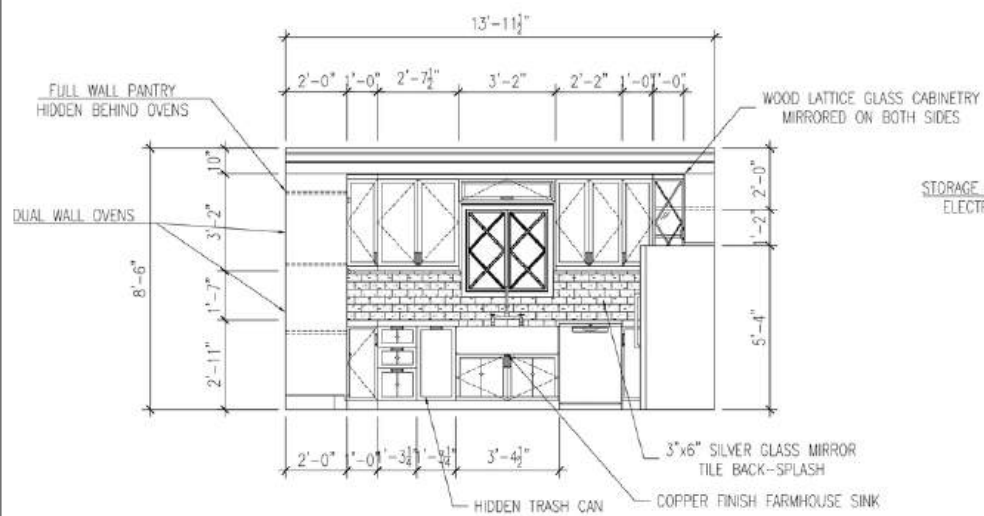
BUNGALOW PROJECT  
THE COOPER FAMILY  
OJAI - CALIFORNIA, USA  
ARCHITECTURAL FIRST FLOOR PLAN

JOB NO. 1  
DATE: 2/22/2024  
AUTHOR: WB

A2.2

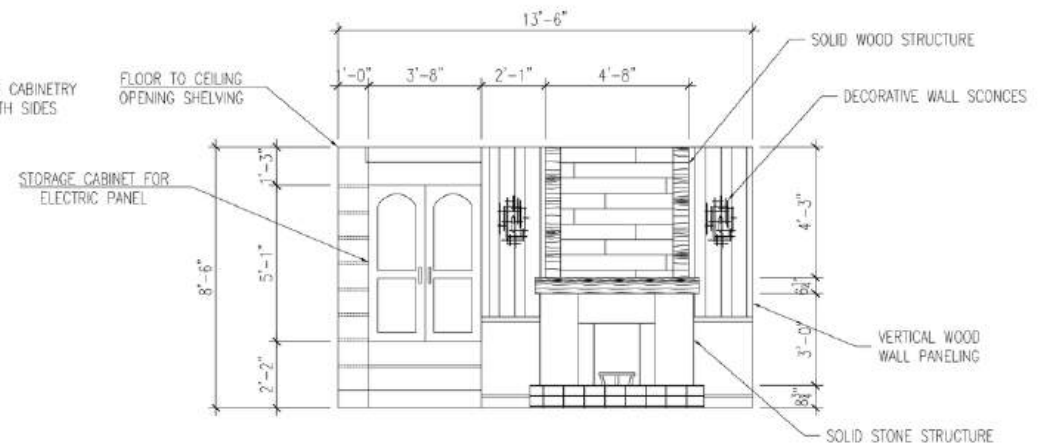
FIRST FLOOR ARCHITECTURAL PLAN  
Completed in AutoCAD Architecture





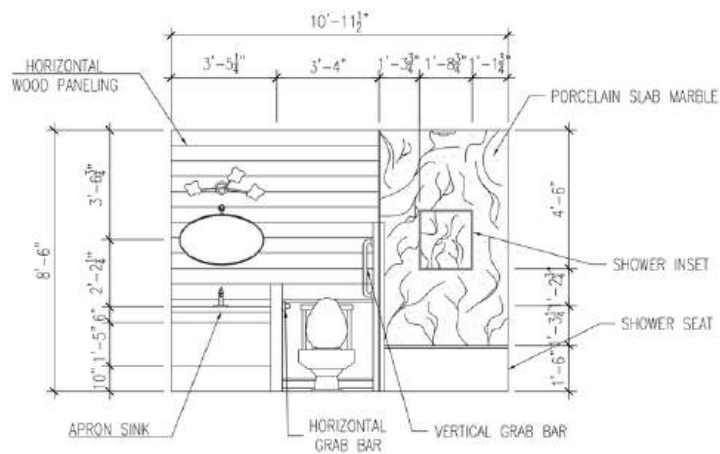
**1 - EAST KITCHEN ELEVATION**

SCALE: 1/2" = 1'-0"



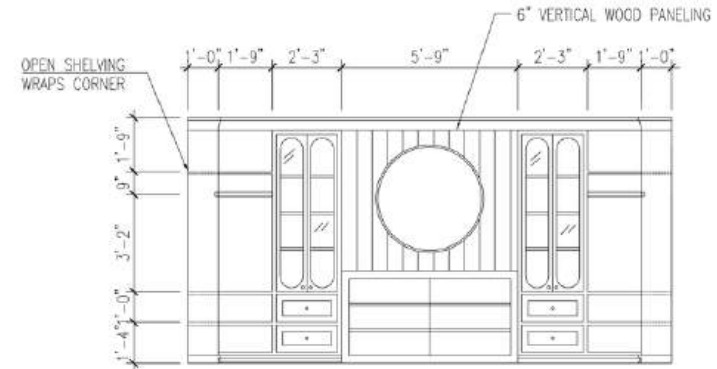
**2 - WEST LIBRARY ELEVATION**

SCALE: 1/2" = 1'-0"



**3 - SOUTH BATHROOM 1 ELEVATION**

SCALE: 1/2" = 1'-0"



**4 - WEST PRIMARY CLOSET ELEVATION**

SCALE: 1/2" = 1'-0"



BUNGALOW PROJECT  
THE COOPER FAMILY  
OJAI - CALIFORNIA USA  
ELEVATIONS

JOB NO. 1  
DATE: 2/25/2014  
AUTHOR: MBL

**A3.0**

# 6 A RESIDENTIAL REDESIGN OF A SPANISH VACATION HOME

Hand drafted and rendered using pen, marker, and colored pencil.

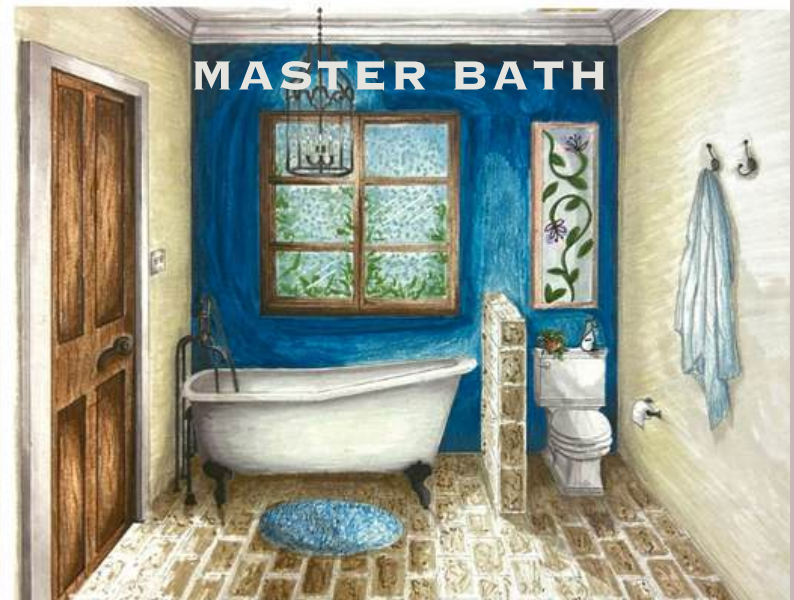
**KITCHEN**



**COFFEE BAR**

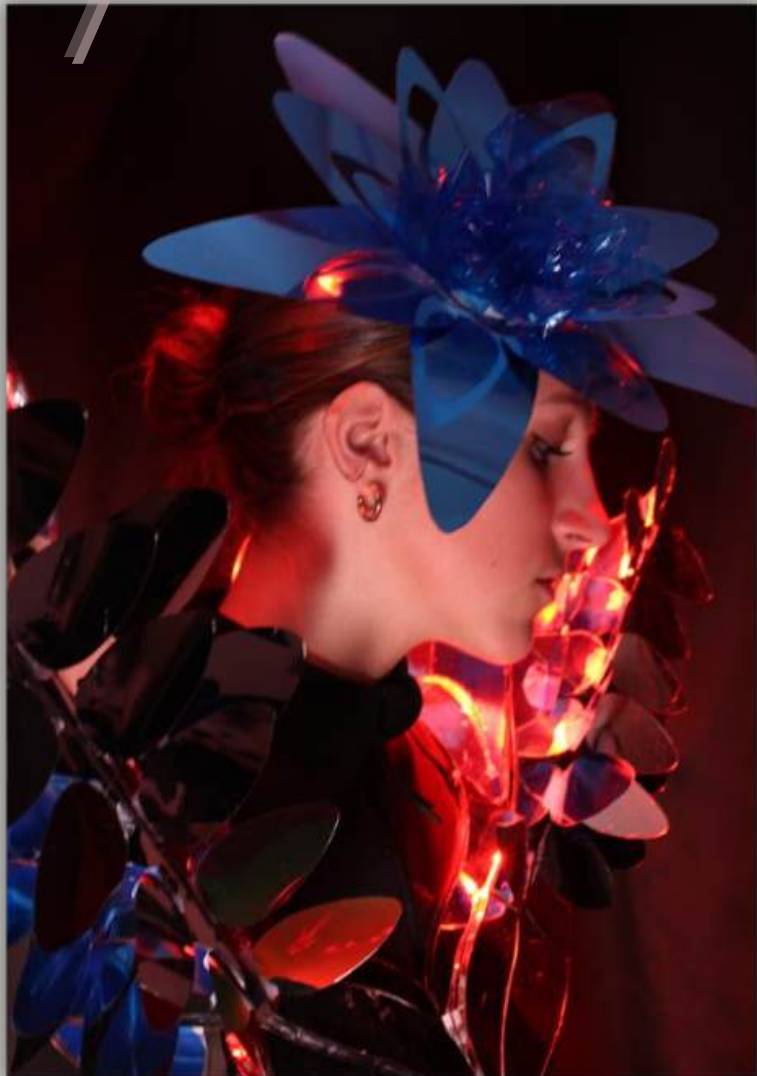


**MASTER BATH**





# MY TAKE ON A WEARABLE SCULPTURE





THANK YOU FOR TAKING THE  
TIME TO GET TO KNOW ME!